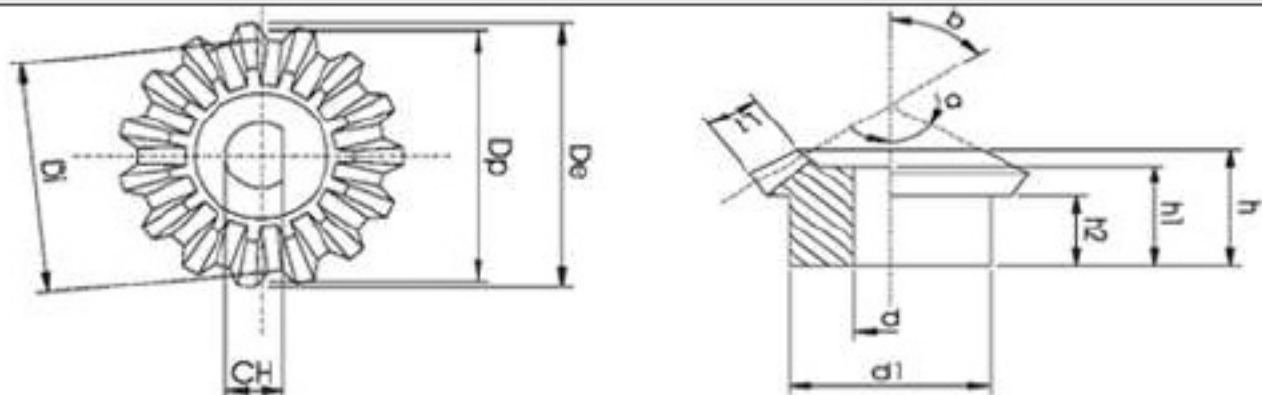


Engrenagem



Código	D_e	D_p	D_i	d	d_1	h	h_1	h_2	CH	$L1$	a	b	Z	M
EN4124-11*	41	40	37	11	31	24	20	13	4	10	45	37	20	2
EN4124-16*	41	40	37	16	31	24	20	13	4	10	45	37	20	2
EN4124-1/2**	41	40	37	1/2"	31	24	20	13	4	10	45	37	20	2
ECD3217	32	30	27	8	24	17	14	10	6,5	6	62	56	15	2
EPD2317	23	20	16	8	14	17	15	10	6,5	6	40	33	10	2